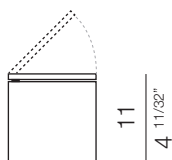
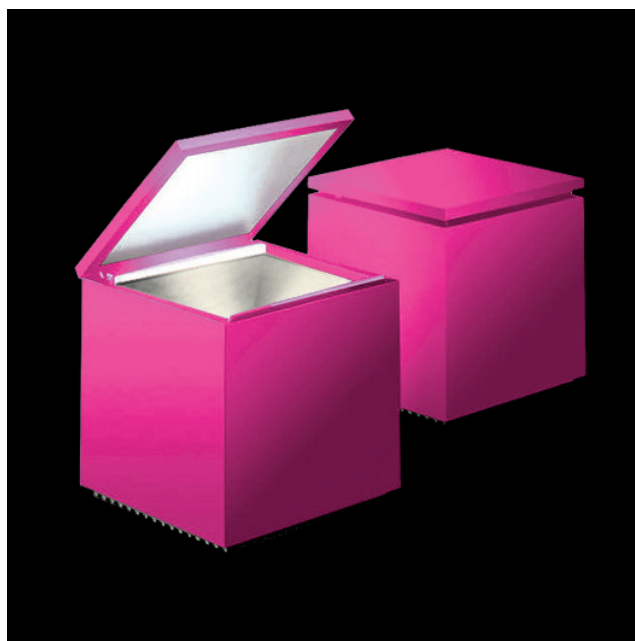






# Cuboled



10x10  
4"x4"



	luminaire
materials	technopolymers
environment	interiors
mounting location	table
emission	indirect and concentrated light
weight	0,5 kg
tension	230V
insulation class	2
plug	europaean 2 poles
IP classification	IP20
certifications	CE    
design	Luta Bettonica, Mario Melocchi, 1972/2012

	light source
source	LED
number of LED	1
power	2W
life	50.000 h
colour temperature	2.700K
CRI	≥ 90

## finishes



**flash colour fuchsia**  
cod 246L



**flash colour yellow**  
cod 247L



**flash colour green**  
cod 248L



**grafiauno**  
cod 245L



**violet**  
cod 141L



**chrome**  
cod 289L



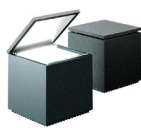
**white**  
cod 136L



**red**  
cod 137L



**black**  
cod 138L



**silk lacquer  
anthracite**  
cod 139L



**metallizzato  
silver**  
cod 288L



**pentacolor**  
cod 294L